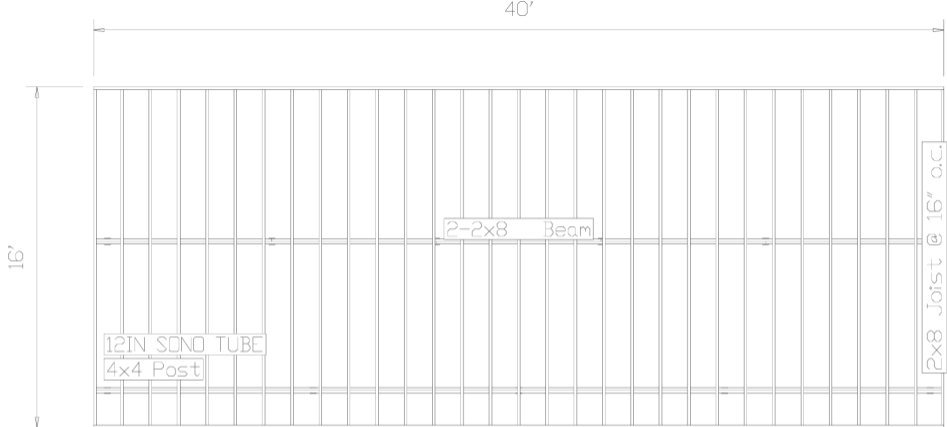


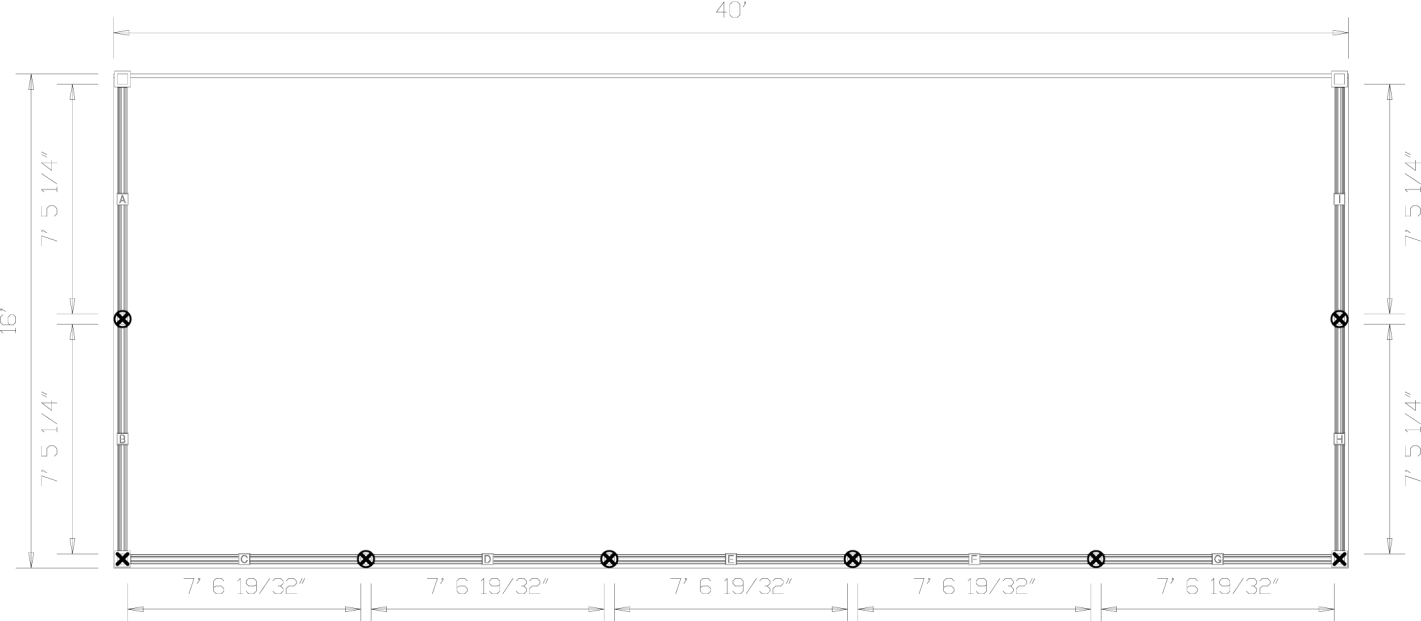
STRESS ANALYSIS

MEMBER TYPE	SIZE	STRESS FACTOR	FACTOR LOAD	COMPOSITE LOAD
JOISTS	2X8 16"	DEFLECTION	272 PSF	
		BENDING	231 PSF	
		SHEAR	169 PSF	
		COMPRESSION	272 PSF	169 PSF
BEAMS	2-2X8	DEFLECTION	62 PSF	
		BENDING	55 PSF	
		SHEAR	57 PSF	
		COMPRESSION	270 PSF	55 PSF
POSTS	4X4	STABILITY	390 PSF	
		BEARING	366 PSF	366 PSF
		TOTAL LOAD		55 PSF
		DEAD LOAD		10 PSF
		LIVE LOAD		45 PSF



Plan View

Scale: 3/16" = 1'



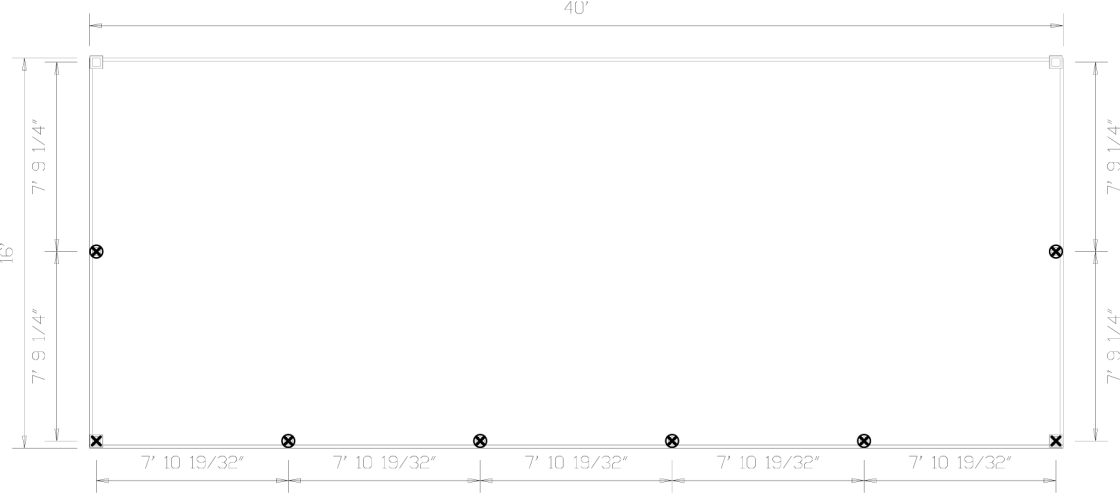
Rail Layout



Post	SKU	Description
⊗		4"X4"x42" Post Sleeve, White
⊗		4"X4"x42" Post Sleeve, White
⊗		4"X4"x42" Post Sleeve, White

Rails

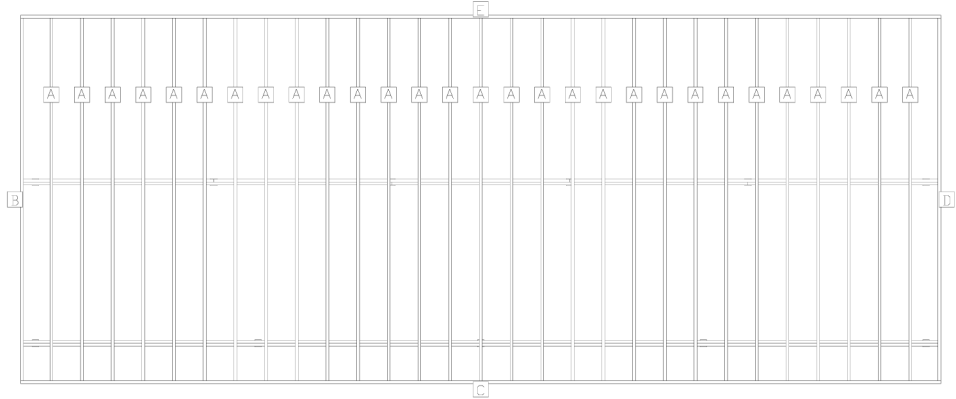
Section	X-ref	Cut From
D		(8' Square Pickets, 36" Level, White)
C		(8' Square Pickets, 36" Level, White)
E		(8' Square Pickets, 36" Level, White)
F		(8' Square Pickets, 36" Level, White)
G		(8' Square Pickets, 36" Level, White)
A		(8' Square Pickets, 36" Level, White)
B		(8' Square Pickets, 36" Level, White)
H		(8' Square Pickets, 36" Level, White)
I		(8' Square Pickets, 36" Level, White)



Railpost Layout
Post SKU



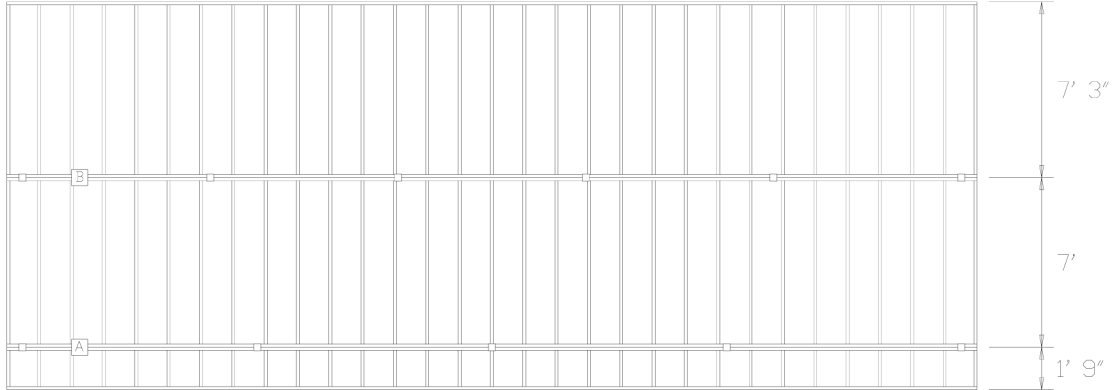
Description
 4'X4"x42" Post Sleeve, White
 4'X4"x42" Post Sleeve, White
 4'X4"x42" Post Sleeve, White



LABEL	LENGTH	BEVELS	LABEL	LENGTH	BEVELS
A joist (29)	15' 9"		C rim	40'	
B rim	15' 9"		D rim	15' 9"	
			E rim	40'	

Cut List

Scale: 3/16" = 1'



BEAM LABEL	BEAM LENGTH	POST COUNT	POST SPACING
A	40'	5	9' 8 1/4"
B	40'	6	7' 9"

Post spacing is measured center-to-center.

Depth of concrete footers --- 48"

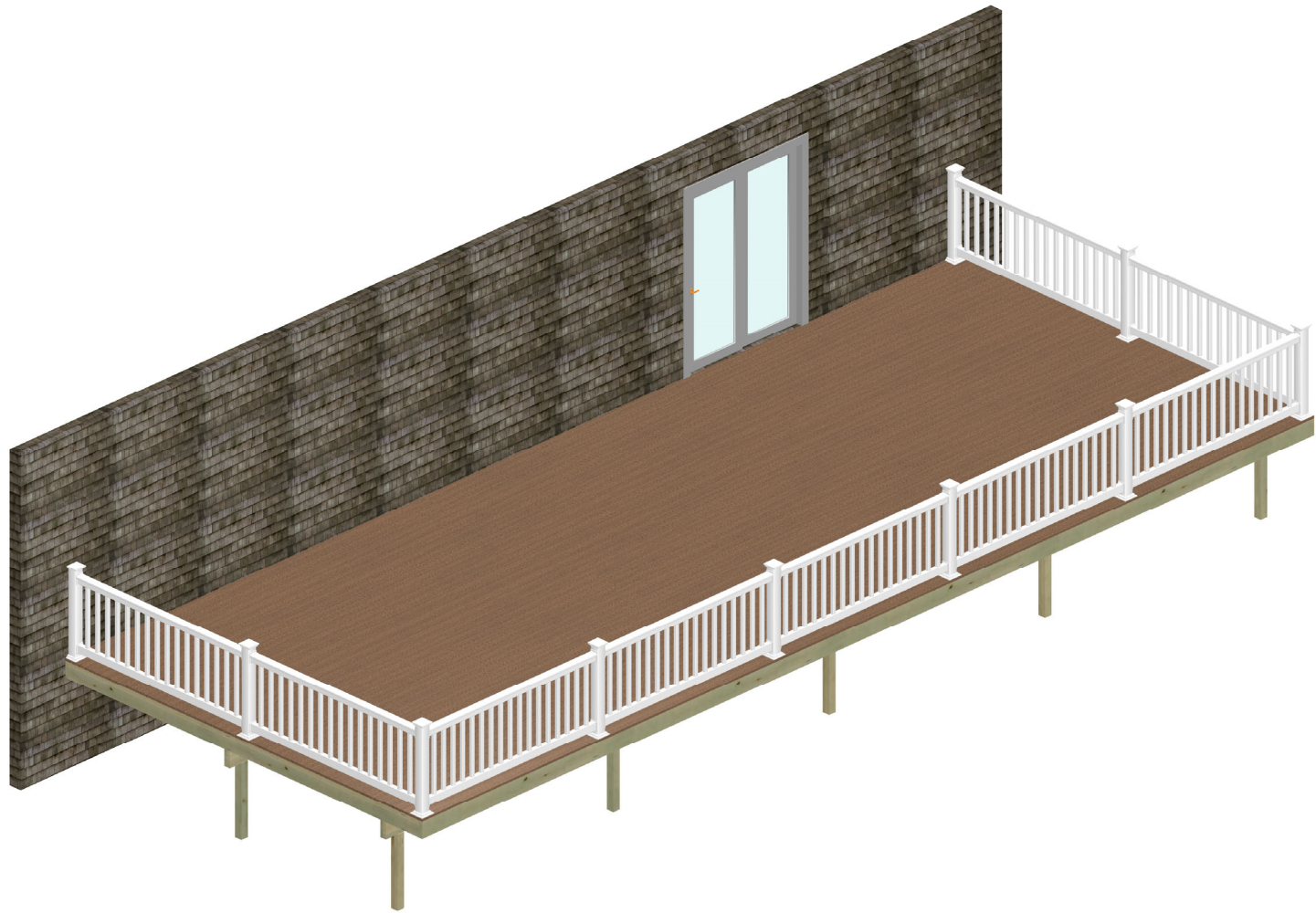
Beam Layout

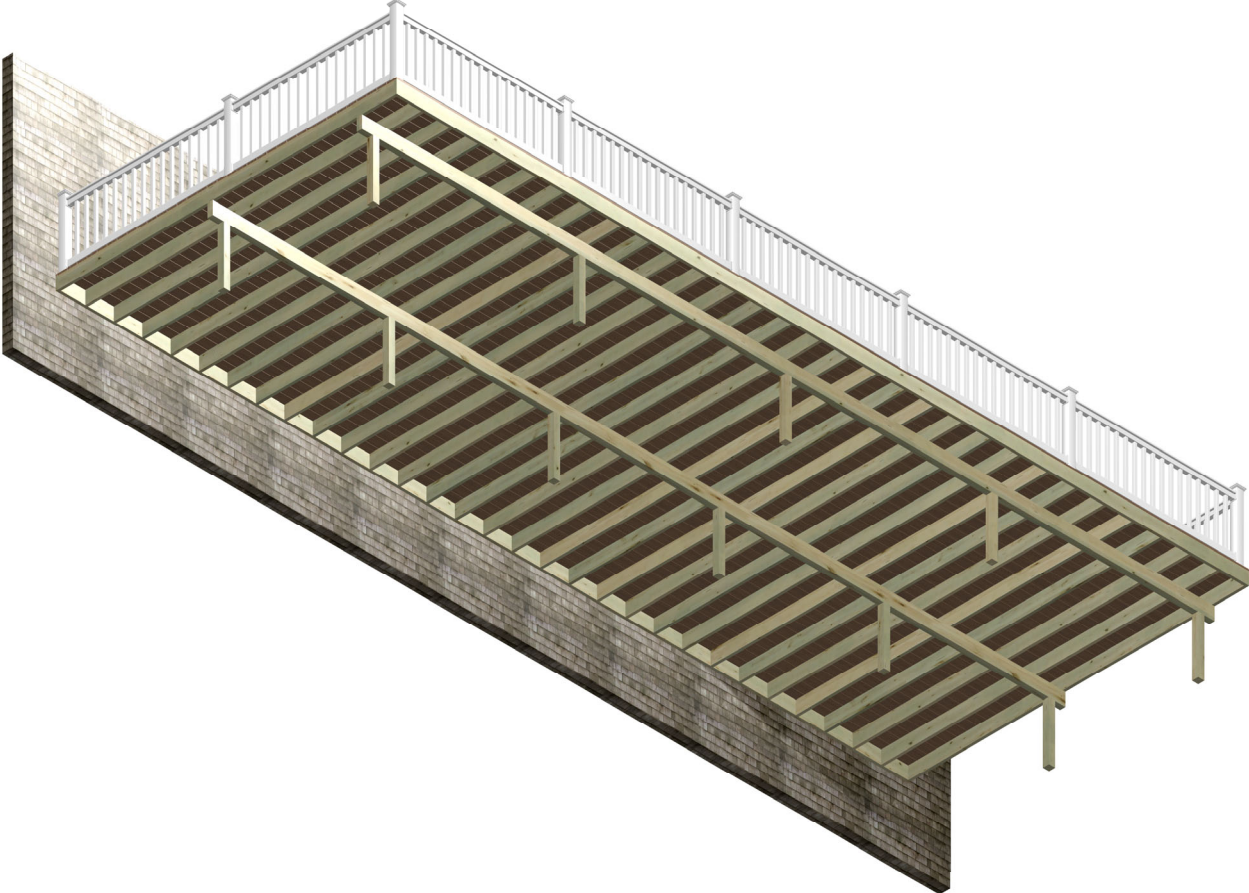
Scale: 3/16" = 1'

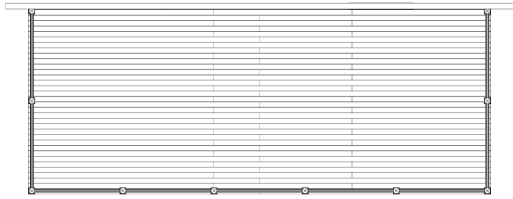
	A) 12'		A) 12'		B) 16'
B) 16'	C) 20'		A) 12'		A) 12'
B) 16'	C) 20'		A) 12'		C) 20'
B) 16'	C) 20'		A) 12'		A) 12'
B) 16'	C) 20'		A) 12'		C) 20'
B) 16'	C) 20'		A) 12'		A) 12'
B) 16'	C) 20'		A) 12'		C) 20'
B) 16'	C) 20'		A) 12'		A) 12'
B) 16'	C) 20'		A) 12'		C) 20'
B) 16'	C) 20'		A) 12'		A) 12'
B) 16'	C) 20'		A) 12'		C) 20'
B) 16'	C) 20'		A) 12'		A) 12'
B) 16'	C) 20'		A) 12'		C) 20'
B) 16'	C) 20'		A) 12'		A) 12'
B) 16'	C) 20'		A) 12'		C) 20'
B) 16'	C) 20'		A) 12'		A) 12'
B) 16'	C) 20'		A) 12'		C) 20'
B) 16'	C) 20'		A) 12'		A) 12'
B) 16'	C) 20'		A) 12'		C) 20'
B) 16'	C) 20'		A) 12'		A) 12'
B) 16'	C) 20'		A) 12'		C) 20'
B) 16'	C) 20'		A) 12'		A) 12'
B) 16'	C) 20'		A) 12'		C) 20'
B) 16'	C) 20'		A) 12'		A) 12'
B) 16'	C) 20'		A) 12'		C) 20'
B) 16'	C) 20'		A) 12'		A) 12'
B) 16'	C) 20'		A) 12'		C) 20'
B) 16'	C) 20'		A) 12'		A) 12'

Plank Layout

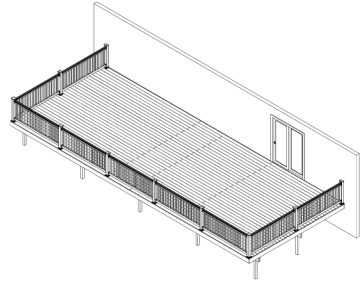
Scale: $3/16'' = 1'$



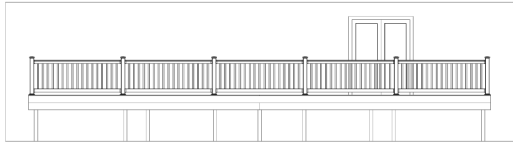




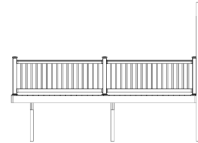
Plan View



Iso (Front,Right,Top) View



Front Elevation



Right View

Elevations

Scale: 3/32" = 1'